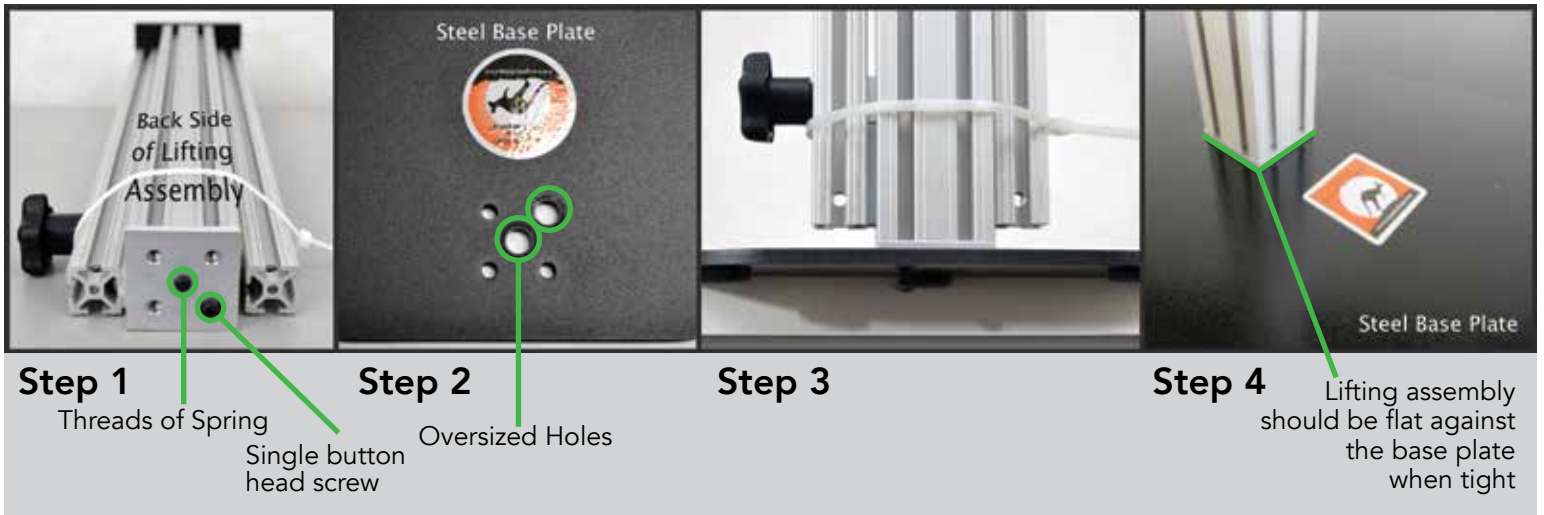
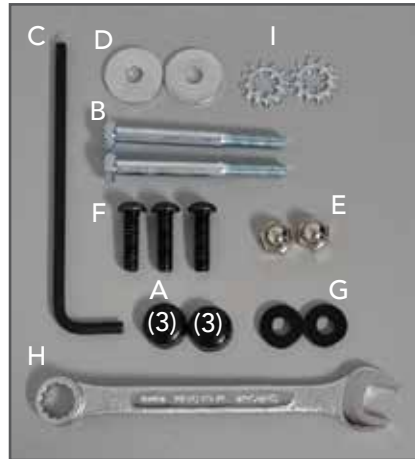


THE WALLABY JUNIOR - ASSEMBLY INSTRUCTIONS

Assembly Parts list

- A. (6) Black Screw Covers
- B. (2) 1/4-20 x2 .50 Hex Head Bolts
- C. (1) 5/32 Allen Wrench
- D. (2) Fender Washers
- E. (2) Acorn Nuts
- F. (3) 1/4-20 x 7/8 BHCS
- G. (2) Thick Black Washers
- H. (1) 7/16 Wrench
- I. (2) Locking Star Washers



Step 1: Lay the lifting assembly on a solid surface with the back side up as shown. Notice the single Button Head Bolt in the assembly union plate. **DO NOT LOOSEN THE SINGLE BUTTON HEAD BOLT THAT IS NOTATED.**

Step 2: Notice the (2) oversized holes in the Base Plate. The Single Button Head Bolt will go into the oversized hole on the top right, while the other 3 holes should line up with the base. The center oversized hole is not used with this unit.

Step 3: With the Base Plate over hanging the table about 2 inches, hold the Lifting Assembly above the Base Plate and align the Single Button Bolt into the oversized hole. Place one 1/4-20 x 7/8 BHCS{F} through the base plate to screw in the lifting assembly.

Step 4: Insert and thread the other (2) 1/4-20 x 7/8 BHCS{F} through the Base Plate and into the Lifting Assembly. Once all (3) bolts are threaded in, tighten securely with the 5/32 allen wrench{C}. Lifting Assembly should be flat against the Base and all three bolts should look like the picture above.

THE WALLABY JUNIOR - ASSEMBLY INSTRUCTIONS



STEP 5,6,7

Step 5: Put (1) Locking Star Washer{I} on each of the 1/4 –20 x 2.50 Hex Head Bolts{B}.

Step 6: Insert the (2) 1/4-20 x 2.50 Hex Head Bolts{B} through the holes in the Vertical Rail.

Step 7: Put (1) Fender Washer{D} on each of the 1/4-20 x 2.50 Hex Head Bolts{B} on the other side of the Vertical Rail.



STEP 8

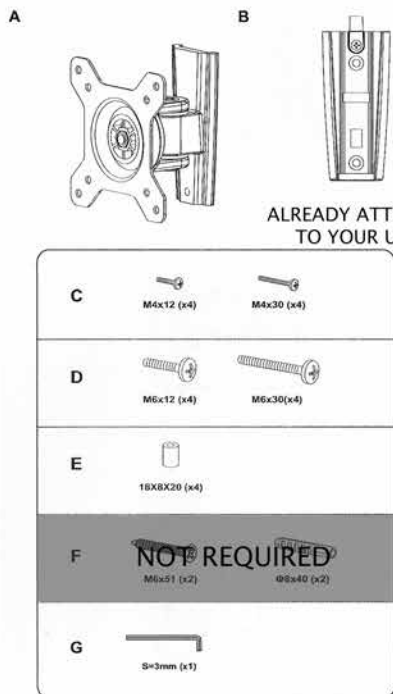
Step 8: Lift the Work Surface up and align the holes in the Horizontal Rail with the (2) 1/4-20 x 2.50 Hex Head Bolts{B}. Push the Work Surface onto the Hex Head Bolts until the threads of the bolts come through the Horizontal Rail.



STEP 9

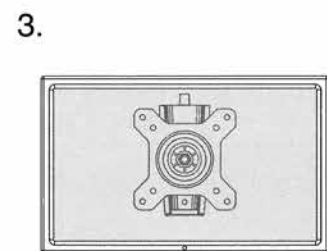
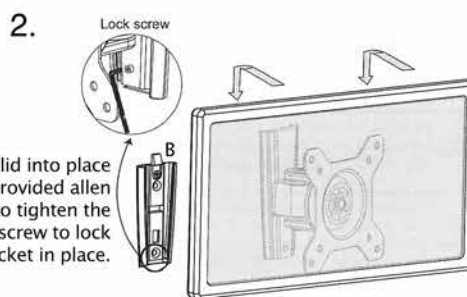
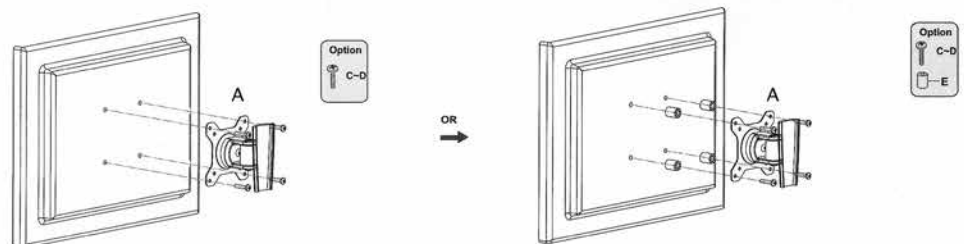
Step 9: Put (1) Black Washer{G} and (1) Acorn Nut{E} on the end of each of the Hex Head Bolts. Using the 7/16 wrench{H} tighten the Acorn Nuts securely. After you have the work surface secure, you can cut the zip tie holding the assembly together.

Step 10: Follow the instructions below to mount your monitor. Then place your monitor on the unit without tightening the set screw mentioned in step 2. *Is the monitor height right for you in the seated and standing position?* If not, remove the monitor by sliding part A out of part B(mentioned below), and adjust the height of part B by loosening each of the notated four bolts **BY ONLY HALF A TURN**, with the provided 7/16 wrench{H}. Adjust to your height and tighten the 4 bolts securely. Use 4 black caps to cover the exposed bolts once completed.



ALREADY ATTACHED TO YOUR UNIT

1. Try using the shortest screw to mount your monitor to prevent screwing into the internal components of the monitor.



THE WALLABY JUNIOR

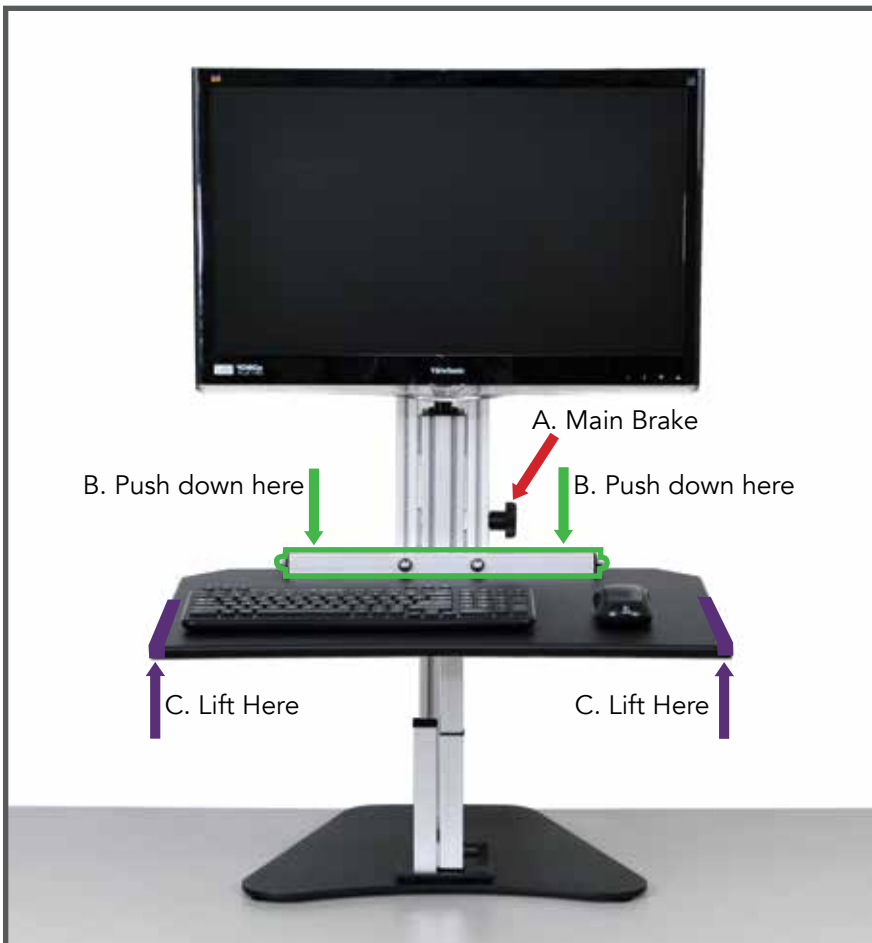


The Wallaby Junior is designed to hold your monitor mounted in a fixed position, and will travel up and down with your keyboard and mouse on the work surface. Your Wallaby is shipped in the down position with the work surface brake tightened. The mount may need adjusted to your desired height for both the seated and standing position.

The Wallaby Junior has (1) spring that assists in raising your unit to the standing position and works best when your monitor and keyboard are in place. This reduces the amount of pressure needed to lower the unit.

Always push down with both hands on the horizontal rear rail when lowering the work surface.

HOW TO USE THE WALLABY JUNIOR



To raise the Wallaby Junior, loosen the main brake(A) and lift the main work surface on the sides(C & C).

To lower the Wallaby Junior, loosen the main brake(A) and lean into the unit using your upper body weight pushing down with both hands on the horizontal bar at the rear of the main work surface (B & B).

A. Main Brake

B. Work Surface Rail

C. Main Work Surface

THE STABILIZATION LEG

Your adjustable height desk top unit comes with an adjustable leg that can be used to give you maximum stability when you are using "The Kangaroo" in the standing position.

Raise the Kangaroo work surface to your desired standing height and tighten the work surface brake.

Place the adjustable leg under the work surface and loosen the adjustable leg brake. Only loosen the brake by a turn or two, too much and the brake will disengage from the slot.

Extend the adjustable leg until it engages the bottom of the work surface and then tighten the adjustable leg brake.

The leg is shipped with the extension section installed to give you additional height adjustment. If this is too tall for your application, simply unscrew the extension selection.

- A** Extension selection
- B** Screws into here

**ALWAYS REMEMBER TO REMOVE THE STABILIZATION LEG
BEFORE LOWERING YOUR WORK SURFACE**

